



**PART – 5**

**APPLICATION PROCESS STANDARD**

**23.06.2019**



**Title:** Compost Labelling

**Contact Addresses :** Merkez Mahallesi Dr.Sadık Ahmet Cd, No 38/44 A Bağcılar/İstanbul – Türkiye / Turkey

**Contact Mail:** info@clabel.org

**Website:** www.clabel.org

**Phone:** +90 212 702 00 00

### ABOUT US

Compost, animal and vegetable wastes are digested or grinded as black gold or natural fertilizer. Compost is not a substitute for direct breeding. However, gaining the compost's acquired condition and pH in order to benefit from the gain to be obtained in a large gain gives a lot. By making definite additions to the compost, it is possible to obtain a quality cultivation.

Compost manure is a very effective tool for recycling natural waste and re-enriching the soil. Because, thanks to composting, the wastes that go to waste under normal conditions dissolve in the moist and oxygenated environment of the soil and gain the form of organic fertilizer. Thus, even the most unproductive soils can breathe and revive.



## 1.SCOPE

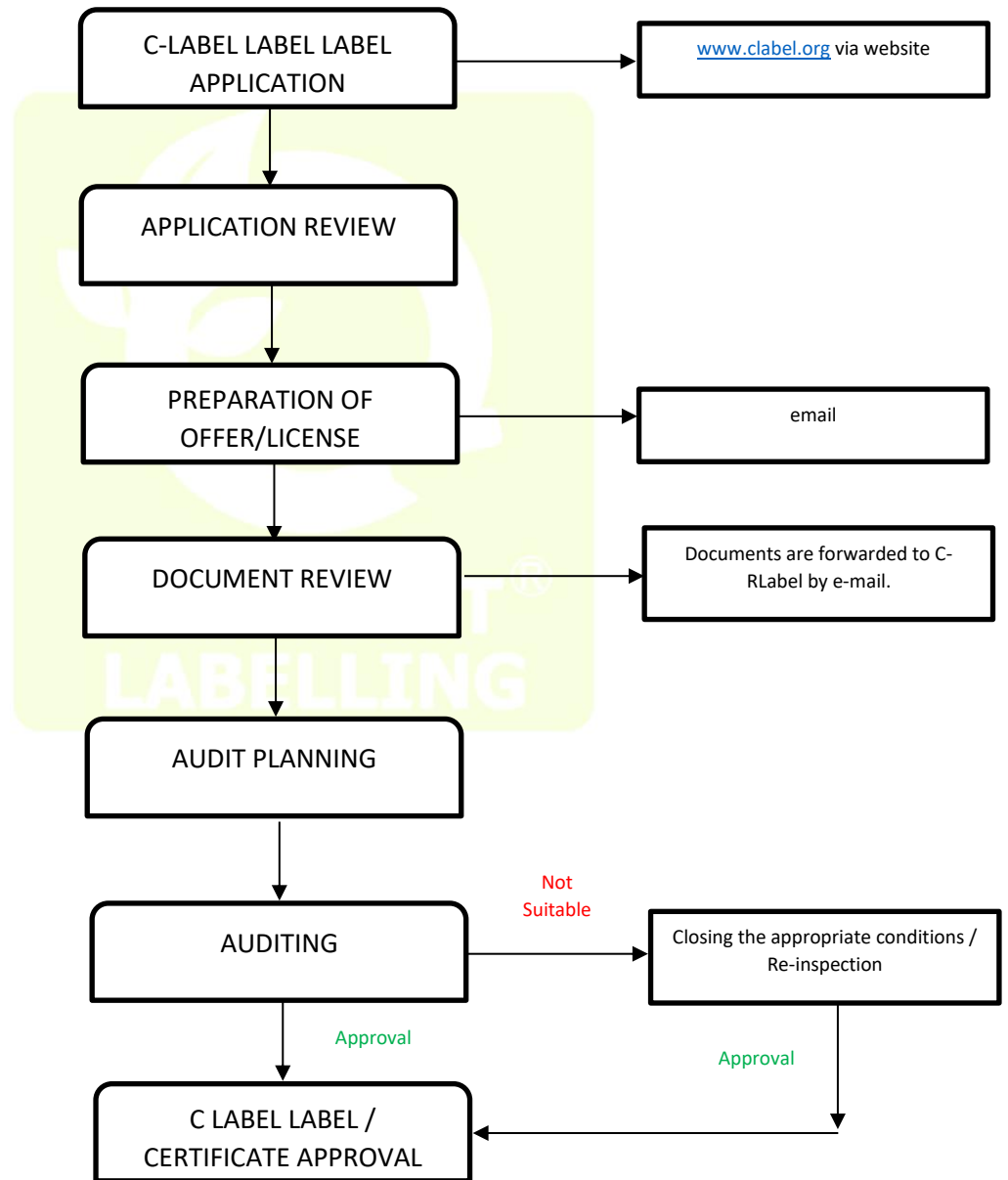
This standard defines how the application process will be done.

## 2.PROCESS

The organization can reference the R-Label label by performing the following steps.

### ANNEX-1

#### Application Process





**COMPOST<sup>®</sup>  
LABELLING**

### ANNEX -B Review

The organization can provide a review with the following items before applying for the C-Label label.

<b>Queue No.</b>	<b>Questions</b>	<b>POSITIVE</b>	<b>NEGATIVE</b>
1	Has the necessary documentation structure been established for the C-Label system? Is the preservation of records defined?		
2	Has the C-Label policy been created?		
3	Is there an appointment of the person in charge of the C-Label system?		
4	Have the organizational chart and responsibility powers been determined?		
5	Is the C-Label Training process defined? Have the necessary trainings been carried out?		
6	C-Label Is the inappropriate product process defined?		
7	Is the C-Label Corrective action process defined?		
8	Is the R-Label internal audit process defined?		
9	Are there studies on social responsibility?		
10	Is C-Label Supplier verification defined?		
11	Is the C-Label Manufacturing process defined?		
12	Is the separation of C-Label products defined?		
13	Is C-Label products traceable?		
14	Is the sales management of C-Label products determined?		
15	Is the C-Label label logo usage process defined?		
16	Has the C-Label label application been submitted from the <a href="http://www.clabel.org">www.clabel.org</a> site?		
17	Has the offer and license agreement for the C-Label label been approved?		